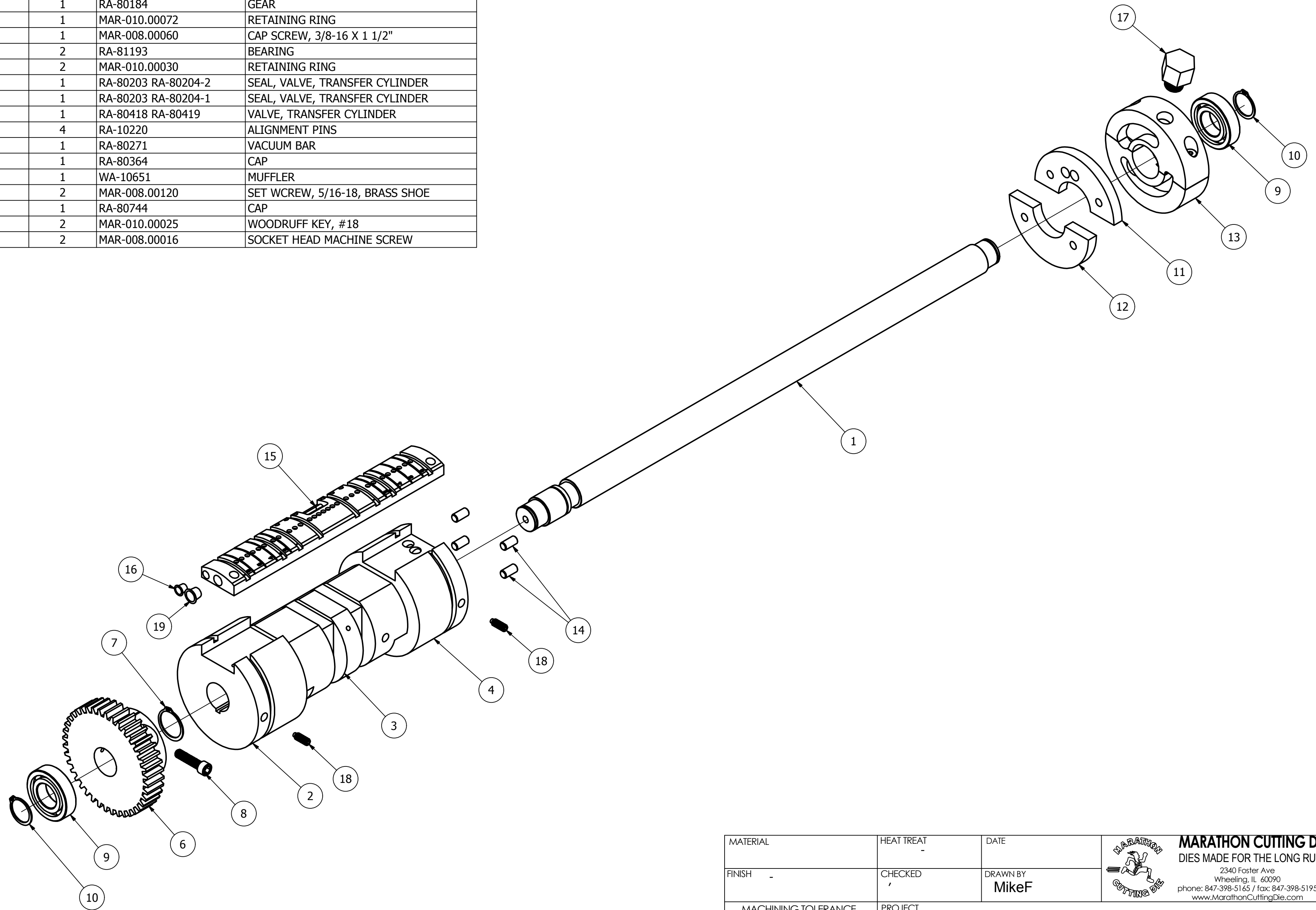



PARTS LIST			
ITEM	QTY	PART NUMBER	DESCRIPTION
1	1	RA-80181	SHAFT, TRANSFER CYLINDER
2	1	RA-82157	CYLINDER END, TRANSFER
3	1	RA-82154	CYLINDER, TRANSFER, FOLD SECTION
4	1	RA-82156	CYLINDER END, TRANSFER
6	1	RA-80184	GEAR
7	1	MAR-010.00072	RETAINING RING
8	1	MAR-008.00060	CAP SCREW, 3/8-16 X 1 1/2"
9	2	RA-81193	BEARING
10	2	MAR-010.00030	RETAINING RING
11	1	RA-80203 RA-80204-2	SEAL, VALVE, TRANSFER CYLINDER
12	1	RA-80203 RA-80204-1	SEAL, VALVE, TRANSFER CYLINDER
13	1	RA-80418 RA-80419	VALVE, TRANSFER CYLINDER
14	4	RA-10220	ALIGNMENT PINS
15	1	RA-80271	VACUUM BAR
16	1	RA-80364	CAP
17	1	WA-10651	MUFFLER
18	2	MAR-008.00120	SET WCREW, 5/16-18, BRASS SHOE
19	1	RA-80744	CAP
20	2	MAR-010.00025	WOODRUFF KEY, #18
21	2	MAR-008.00016	SOCKET HEAD MACHINE SCREW



MATERIAL	HEAT TREAT	DATE	 <b>MARATHON CUTTING DIE</b> DIES MADE FOR THE LONG RUN 2340 Foster Ave Wheeling, IL 60090 phone: 847-398-5165 / fax: 847-398-5195 www.MarathonCuttingDie.com
FINISH	CHECKED	DRAWN BY <b>MikeF</b>	
MACHINING TOLERANCE UNLESS SPECIFIED INCH      METRIC X      = +/- 0.010    +/- 0.25 X.X     = +/- 0.010    +/- 0.13 X.XX    = +/- 0.010    +/- 0.08 X.XXX   = +/- 0.005    +/- 0.02 X.XXXX = +/- 0.0005 ANG.   = +/- 0.5 DEG			PROJECT
TITLE <b>TRANSFER CYLINDER, FOLD SECTION</b>			QTY.
SCALE	REV	SIZE <b>C</b>	DWG. NO. <b>SA-RA-8012</b>
			SHEET <b>1 of 1</b>