

4

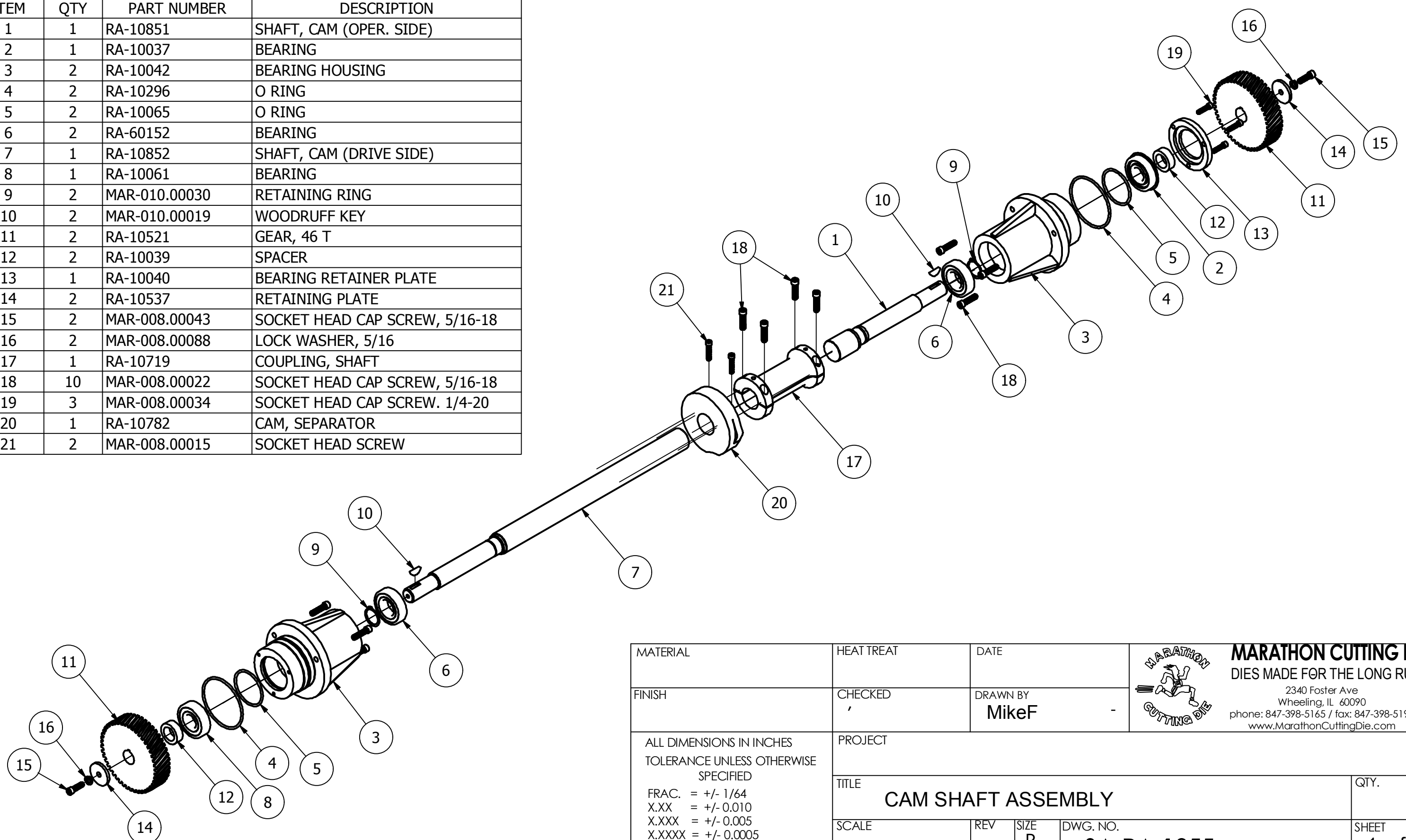
3


2

1

PARTS LIST

ITEM	QTY	PART NUMBER	DESCRIPTION
1	1	RA-10851	SHAFT, CAM (OPER. SIDE)
2	1	RA-10037	BEARING
3	2	RA-10042	BEARING HOUSING
4	2	RA-10296	O RING
5	2	RA-10065	O RING
6	2	RA-60152	BEARING
7	1	RA-10852	SHAFT, CAM (DRIVE SIDE)
8	1	RA-10061	BEARING
9	2	MAR-010.00030	RETAINING RING
10	2	MAR-010.00019	WOODRUFF KEY
11	2	RA-10521	GEAR, 46 T
12	2	RA-10039	SPACER
13	1	RA-10040	BEARING RETAINER PLATE
14	2	RA-10537	RETAINING PLATE
15	2	MAR-008.00043	SOCKET HEAD CAP SCREW, 5/16-18
16	2	MAR-008.00088	LOCK WASHER, 5/16
17	1	RA-10719	COUPLING, SHAFT
18	10	MAR-008.00022	SOCKET HEAD CAP SCREW, 5/16-18
19	3	MAR-008.00034	SOCKET HEAD CAP SCREW. 1/4-20
20	1	RA-10782	CAM, SEPARATOR
21	2	MAR-008.00015	SOCKET HEAD SCREW



MATERIAL	HEAT TREAT	DATE	 MARATHON CUTTING DIE DIES MADE FOR THE LONG RUN 2340 Foster Ave Wheeling, IL 60090 phone: 847-398-5165 / fax: 847-398-5195 www.MarathonCuttingDie.com
FINISH	CHECKED	DRAWN BY MikeF	
ALL DIMENSIONS IN INCHES TOLERANCE UNLESS OTHERWISE SPECIFIED FRAC. = +/- 1/64 X.XX = +/- 0.010 X.XXX = +/- 0.005 X.XXXX = +/- 0.0005 ANG. = +/- 0.5 DEG	PROJECT		QTY.
TITLE CAM SHAFT ASSEMBLY			SHEET 1 of 1
SCALE	REV	SIZE B	

4

3

2

1