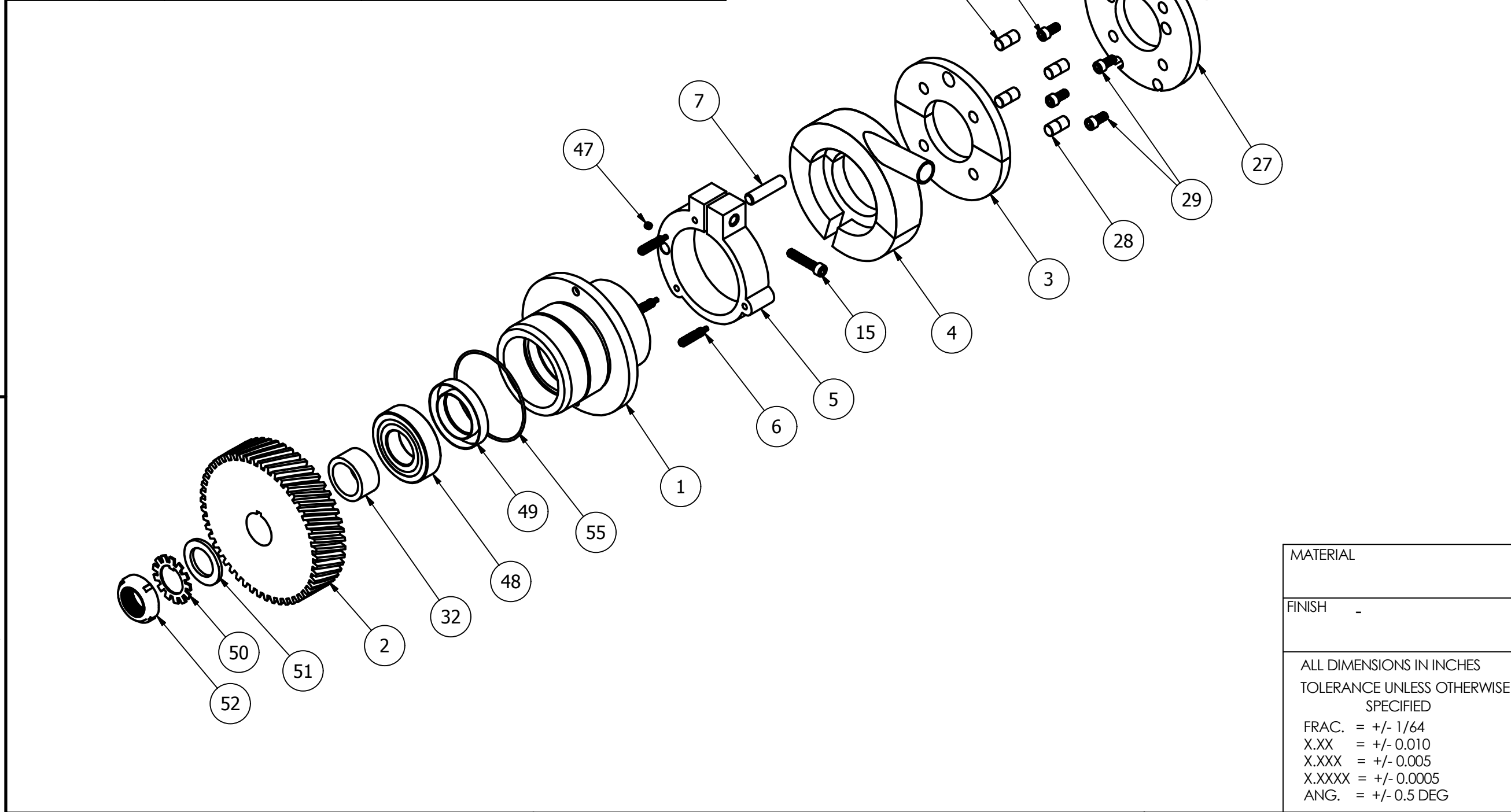



PARTS LIST			
ITEM	QTY	PART NUMBER	DESCRIPTION
1	1	RA-10234	RETAINER BEARING
2	1	RA-10036	GEAR, 46 T
3	1	RA-10253 RA-10254	VALVE SEAL
4	1	RA-10276	VALVE, SUCKER CYLINDER
5	1	RA-10293	VALVE ADJUST RING
6	3	RA-10192	SPRING PLUNGER
7	1	MAR-010.00003	DOWEL PIN, 3/8" X 1 1/2", ALLOY STEEL
8	1	RA-10785-1	FEED CYLINDER
9	1	RA-10429	BLOCK, VACUUM
10	2	RA-10264	BEARING BLOCK
11	1	RA-10428	COMPRESSION SPRING
12	1	RA-10258	VALVE, SUCKER SHAFT
13	1	RA-10257	O RING
14	1	RA-10259	SCREW, VALVE LOCATING
15	6	MAR-008.00015	SOCKET HEAD SCREW
16	1	RA-10005	SUCKER SHAFT
17	2	RA-10268	SPACER, SUCKER SHAFT
18	4	RA-10266	NEEDLE BEARING
19	4	RA-10265	SEAL, BEARING RETAINER
20	4	RA-10267	O-RING, BUNA-N
21	2	RA-10033	GREASE FITTING
22	1	RA-10418-M	RA-10418 & RA-10419, COUPLING
23	1	RA-10418-F	RA-10418 & RA-10419, COUPLING
24	4	MAR-008.00014	SET SCREW, 1/4-28
25	1	MAR-010.00014	WOODRUFF KEY, #3
26	1	MAR-010.00013	RETAINING RING
27	1	RA-10255	PLATE, SUCKER
28	4	RA-10220	ALIGNMENT PINS
29	4	MAR-008.00027	SOCKET HEAD CAP SCREW, 1/4-20
30	1	MAR-010.00019	WOODRUFF KEY
31	2	RA-10210	BEARING
32	1	RA-10233	SPACER, SUCKER DRIVE SHAFT
33	1	SA-RA-1004	PLANETARY GEARBOX ASSEMBLY
34	1	RA-10206	GEAR, SUN - 66T
35	1	RA-10205	SUNGEAR BRACKET
36	6	MAR-008.00114	SOCKET HEAD CAP SCREW, 10-32

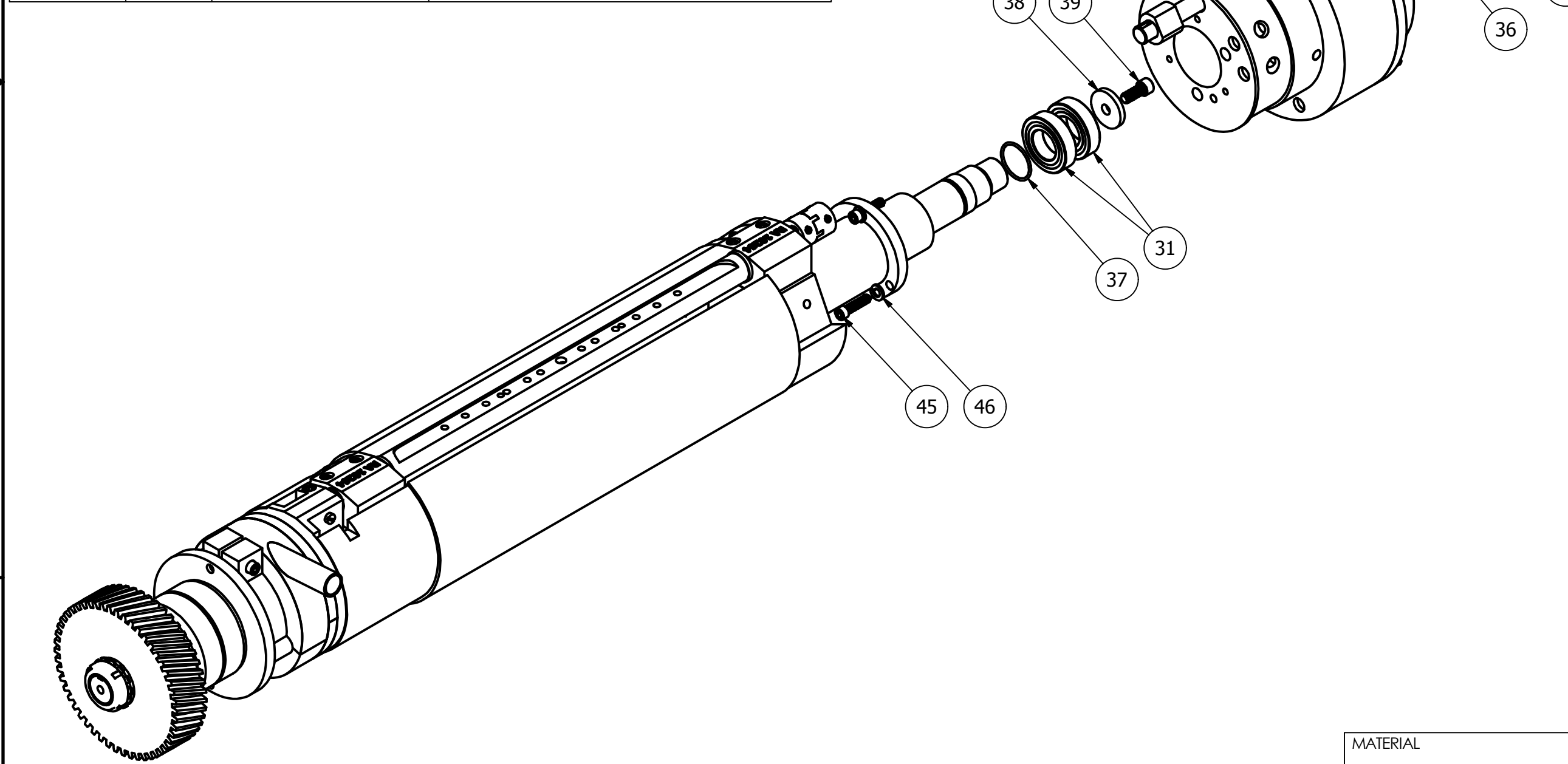
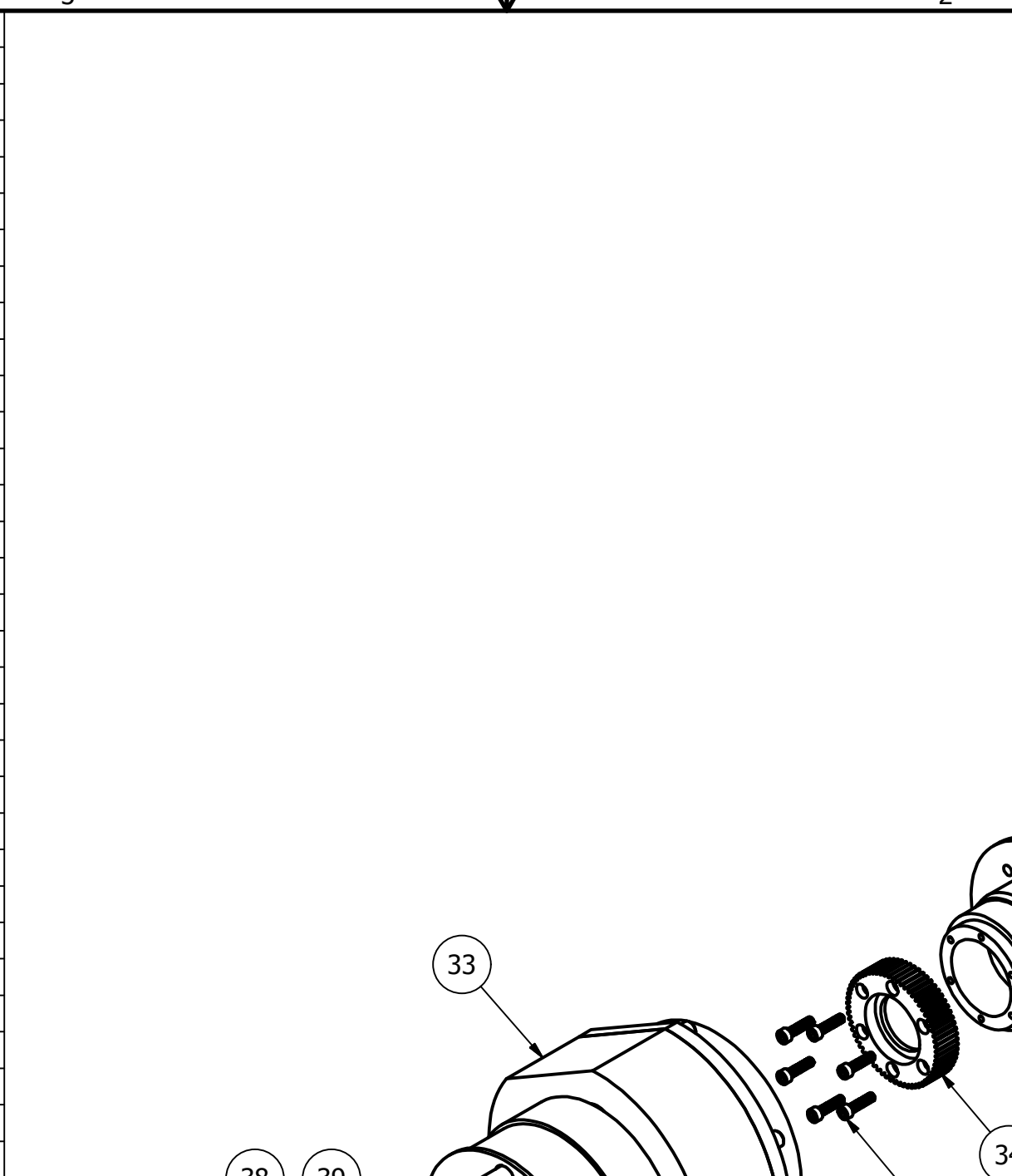


PARTS LIST			
ITEM	QTY	PART NUMBER	DESCRIPTION
37	1	RA-10186	O RING
38	1	RA-10137	SUCKER CYLINDER SHAFT BLOCK
39	1	MAR-008.00051	SOCKET HEAD CAP SCREW, 5/16-18
40	1	RA-10202	BEARING CAP
41	1	P-830	OIL CAP
42	2	MAR-008.00082	SHCS, 5/16-18
43	2	MAR-008.00043	SOCKET HEAD CAP SCREW, 5/16-18
44	1	RA-10203	SIGHT GLASS
45	3	MAR-008.00034	SOCKET HEAD CAP SCREW. 1/4-20
46	3	MAR-012.00003	LOCK WASHER
47	1	MAR-008.00004	SET SCREW, 10-32
48	1	WR-9056	BEARING
49	1	RA-10232	OIL SEAL
50	1	RA-10164	LOCK WASHER
51	1	RA-70277	WASHER, HARDENED THRUST
52	1	RA-10163	LOCKNUT
53	1	RA-10211	BRACKET
54	1	RA-10204	O RING
55	1	RA-10155	O RING


MATERIAL	HEAT TREAT	DATE	 <b>MARATHON CUTTING DIE</b> DIES MADE FOR THE LONG RUN 2340 Foster Ave Wheeling, IL 60090 phone: 847-398-5165 / fax: 847-398-5195 www.MarathonCuttingDie.com
FINISH	CHECKED	DRAWN BY <b>MikeF</b>	
ALL DIMENSIONS IN INCHES TOLERANCE UNLESS OTHERWISE SPECIFIED FRAC. = +/- 1/64 X.XX = +/- 0.010 X.XXX = +/- 0.005 X.XXXX = +/- 0.0005 ANG. = +/- 0.5 DEG			PROJECT
TITLE			QTY.
SCALE			SHEET
REV			1 of 2
SIZE			
DWG. NO.			
C			
SA-RA-1003			

PARTS LIST			
ITEM	QTY	PART NUMBER	DESCRIPTION
1	1	RA-10234	RETAINER BEARING
2	1	RA-10036	GEAR, 46 T
3	1	RA-10253 RA-10254	VALVE SEAL
4	1	RA-10276	VALVE, SUCKER CYLINDER
5	1	RA-10293	VALVE ADJUST RING
6	3	RA-10192	SPRING PLUNGER
7	1	MAR-010.00003	DOWEL PIN, 3/8" X 1 1/2", ALLOY STEEL
8	1	RA-10785-1	FEED CYLINDER
9	1	RA-10429	BLOCK, VACUUM
10	2	RA-10264	BEARING BLOCK
11	1	RA-10428	COMPRESSION SPRING
12	1	RA-10258	VALVE, SUCKER SHAFT
13	1	RA-10257	O RING
14	1	RA-10259	SCREW, VALVE LOCATING
15	6	MAR-008.00015	SOCKET HEAD SCREW
16	1	RA-10005	SUCKER SHAFT
17	2	RA-10268	SPACER, SUCKER SHAFT
18	4	RA-10266	NEEDLE BEARING
19	4	RA-10265	SEAL, BEARING RETAINER
20	4	RA-10267	O-RING, BUNA-N
21	2	RA-10033	GREASE FITTING
22	1	RA-10418-M	RA-10418 & RA-10419, COUPLING
23	1	RA-10418-F	RA-10418 & RA-10419, COUPLING
24	4	MAR-008.00014	SET SCREW, 1/4-28
25	1	MAR-010.00014	WOODRUFF KEY, #3
26	1	MAR-010.00013	RETAINING RING
27	1	RA-10255	PLATE, SUCKER
28	4	RA-10220	ALIGNMENT PINS
29	4	MAR-008.00027	SOCKET HEAD CAP SCREW, 1/4-20
30	1	MAR-010.00019	WOODRUFF KEY

D  
C  
B  
A



PARTS LIST			
ITEM	QTY	PART NUMBER	DESCRIPTION
31	2	RA-10210	BEARING
32	1	RA-10233	SPACER, SUCKER DRIVE SHAFT
33	1	SA-RA-1004	PLANETARY GEARBOX ASSEMBLY
34	1	RA-10206	GEAR, SUN - 66T
35	1	RA-10205	SUNGEAR BRACKET
36	6	MAR-008.00114	SOCKET HEAD CAP SCREW, 10-32
37	1	RA-10186	O RING
38	1	RA-10137	SUCKER CYLINDER SHAFT BLOCK
39	1	MAR-008.00051	SOCKET HEAD CAP SCREW, 5/16-18
40	1	RA-10202	BEARING CAP
41	1	P-830	OIL CAP
42	2	MAR-008.00082	SHCS, 5/16-18
43	2	MAR-008.00043	SOCKET HEAD CAP SCREW, 5/16-18
44	1	RA-10203	SIGHT GLASS
45	3	MAR-008.00034	SOCKET HEAD CAP SCREW, 1/4-20
46	3	MAR-012.00003	LOCK WASHER
47	1	MAR-008.00004	SET SCREW, 10-32
48	1	WR-9056	BEARING
49	1	RA-10232	OIL SEAL
50	1	RA-10164	LOCK WASHER
51	1	RA-70277	WASHER, HARDENED THRUST
52	1	RA-10163	LOCKNUT
53	1	RA-10211	BRACKET
54	1	RA-10204	O RING
55	1	RA-10155	O RING

MATERIAL	HEAT TREAT	DATE	 <b>MARATHON CUTTING DIE</b> DIES MADE FOR THE LONG RUN 2340 Foster Ave Wheeling, IL 60090 phone: 847-398-5165 / fax: 847-398-5195 www.MarathonCuttingDie.com	
FINISH	CHECKED	DRAWN BY <b>MikeF</b>		
ALL DIMENSIONS IN INCHES TOLERANCE UNLESS OTHERWISE SPECIFIED FRAC. = +/- 1/64 X.XX = +/- 0.010 X.XXX = +/- 0.005 X.XXXX = +/- 0.0005 ANG. = +/- 0.5 DEG		PROJECT	TITLE <b>FEED CYLINDER ASSEMBLY</b>	QTY.
		SCALE	REV	SIZE <b>C</b>
		DWG. NO. <b>SA-RA-1003</b>		SHEET <b>2 of 2</b>

D  
C  
B  
A