

**RA**



# Marathon

**We don't just sell parts, we sell solutions.**

**OUR** goal is to make the best quality parts possible, no cutting corners. And since we make our parts **IN HOUSE** there is no middleman which means we can pass on the savings to **YOU!**

Buy online at [marathonparts.com](http://marathonparts.com)

OR call 847.398.5165



## **SUCKER SHAFT, RA-10005**

Both ends of the sucker shaft are **hardened** for a longer and more reliable life. (OEM shafts are soft material)

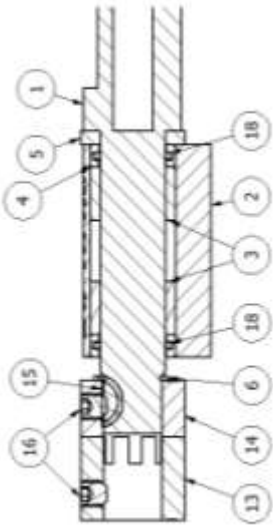
The entire sucker shaft assembly, SA-RA-10005, is available as well as the individual parts as shown.

**\$ 425.00**

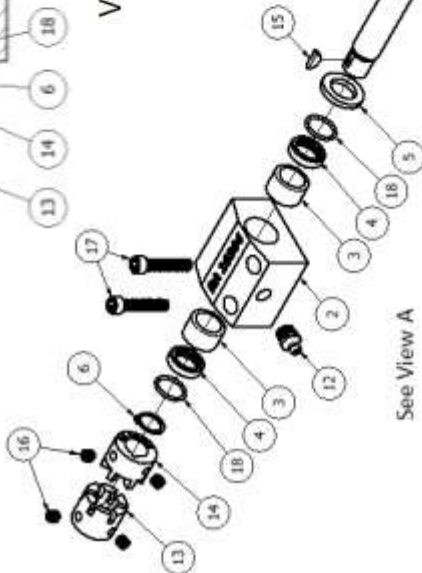
SHAFT ONLY

PARTS LIST			
ITEM	QTY	PART NUMBER	DESCRIPTION
1	1	RA-10005	SUCKER SHAFT
2	2	RA-10264	BEARING BLOCK
3	4	RA-10266	NEEDLE BEARING
4	4	RA-10265	SEAL, BEARING RETAINER
5	2	RA-10268	SPACER, SUCKER SHAFT
6	1	MAR-010.00013	RETAINING RING
7	1	RA-10429	BLOCK, VACUUM
8	1	RA-10259	SCREW, VALVE LOCATING
9	1	RA-10258	VALVE, SUCKER SHAFT
10	1	RA-10257	O RING
11	1	RA-10428	COMPRESSION SPRING
12	2	RA-10033	GREASE FITTING
13	1	RA-10418-F	RA-10418 & RA-10419, COUPLING
14	1	RA-10418-M	RA-10418 & RA-10419, COUPLING
15	1	MAR-010.00014	WOODRUFF KEY, #3
16	4	MAR-008.00014	SET SCREW, 1/4-28
17	5	MAR-008.00015	SOCKET HEAD SCREW
18	4	RA-10267	O-RING, BUNA-N
19	2	MAR-012.00003	LOCK WASHER
20	2	MAR-008.00016	SOCKET HEAD MACHINE SCREW

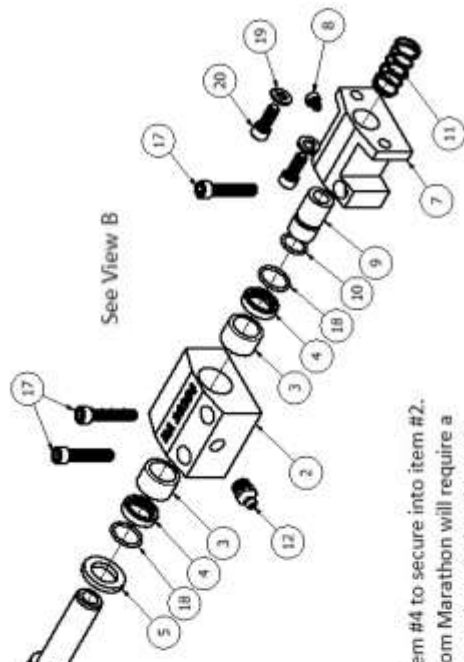
\*



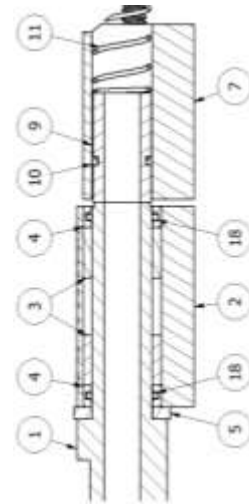
View A



See View A



See View B



View B

Apply Loctite to item #4 to secure into item #2.  
Parts received from Marathon will require a  
Light press to secure item #4 into item #2.

All the parts on this page are available  
individually on [marathonparts.net](http://marathonparts.net)